

BYGG-STRÖM

LUX S10

LIGHTWEIGHT MOBILE LIGHTING TOWER
6x50W LED
USER MANUAL

CE



Model: LUX S10 – A0012
User's manual: MI800A00012
Rev.00
Date: 16/09/2019

Dear customer,

We wish to thank you very much for having purchased our product. With proper handling and maintenance, this product will provide dependable, long-term service. Our customer service is always available, might you need it.

This manual is intended for users of the equipment. This manual is compiled from information available and current at time of approval for printing.

Please consider that this manual may refer to controls and optional equipment that are not present on your particular machine.

It is important that you know your machine and its equipment and how to operate it properly, so

please read the operating instructions carefully and understand them before operating the machine.

Machine specifications can be modified at any time without any obligation to update this publications. It is recommended to read this manual thoroughly because incorrect operation may result in the warranty being void.

Reproduction of this manual is not permitted, unless written approval is obtained from factory.



LUXTOWER part of M.E.T.A. srl
Via Strada Nuova n.28, 27050 Codevilla (PV)-ITALIA
Tel. (+39) 0383 365544 - Fax (+39) 0383 49702
info@luxtower.com - www.luxtower.com

TABLE OF CONTENTS

SAFETY RULES 4

SAFETY PRECAUTIONS TO BE OBSERVED 4

ELECTRICAL HAZARD 5

SERVICING 5

SAFETY STICKERS GUIDE 6

TECHNICAL SPECIFICATIONS 7

MACHINE IDENTIFICATION 7

TECHNICAL DATA 8

LIGHTING TOWER COMPONENTS 9

LIGHTING TOWER USE 10

LIGHTING TOWER POSITIONING 10

STABILIZING THE UNIT 10

DIRECTING THE FLOODLIGHTS 11

SWITCH ON THE FLOODLIGHTS 11

ADJUST THE MAST HEIGHT 12

LOWER THE MAST 12

MAST MAINTENANCE 13

SPARE PARTS 14

ELECTRICAL DIAGRAM 18

WARRANTY 20

SAFETY RULES

SAFETY PRECAUTIONS TO BE OBSERVED

Read this manual and learn the operating characteristics and limitations of the machine before operating it.

The manufacturer declines all liability for injury to persons and damage to components due to not respecting the safety rules.

Report all malfunctions to a maintenance responsible. If there are any repairs to be done, do not operate the equipment. Normal service and maintenance, if performed as required, can prevent unexpected and unnecessary down time. This manual describes standard inspections, operation and servicing with the normal safety precautions required for normal servicing and operating conditions.

Operators and maintenance personnel must be safety conscious and alert to recognize potential operating or servicing safety hazards at all times. They should immediately take the necessary precautions to ensure safe operation and servicing of the machine.



- Be aware of operating risks that may be created by weather changes. Follow the correct procedures in the event of heavy rain or electrical storm.
- Lower tower when not in use, or if high winds or electrical storms are expected in the area.
- Use protective clothing and safety equipment: gloves, safety boots, safety hard hat, goggles, ear protection, and dust masks when necessary.
- Know all side clearances and overhead obstructions for safe operation of the machine.
- ALWAYS** make sure area above the tower is open and clear of any kind of obstruction.
- Position and operate the lighting tower on a firm surface.
- The machine must be levelled and outriggers extended before raising tower.
- Keep area around the machine clear of people while raising and lowering the mast.
- NEVER** using the unit if is in need of repair.
- Check that winch cables are in good condition and are centered on each pulley.
- DO NOT** use the unit if insulation on the electrical cord is cut or worn through.
- DO NOT** permit to untrained personnel to operate the machine.
- NEVER** operate a unit if you are tired, not concentrated or under the influence of drugs or alcohol.
- Keep children and animals away from the machine.

SAFETY RULES

ELECTRICAL HAZARD



Use jumper cables only. Improper use can result in severe damage and safety risk.

NEVER use the machine if insulation on electrical cord is cut or worn through.

NEVER operate lights without protective lens cover in place or with a lens cover that is cracked or damaged!

SERVICING



Only authorized and trained personnel is allowed to perform the machine maintenance.
Please read the operator's manual and maintenance manual before using or servicing the machine.

HIGH VOLTAGE! This equipment utilizes high voltage circuits. Always exercise extreme caution when trouble shooting or repairing any electrical circuit.

Only a qualified electrician should troubleshoot or repair electrical problems occurring on the machine.

Disconnect electrical power before removing protective covers on high voltage electrical closures.

NEVER allow water to accumulate at the base of the machine. If water is present, **DO NOT** service!

DO NOT service electrical components if your clothing or skin is wet.

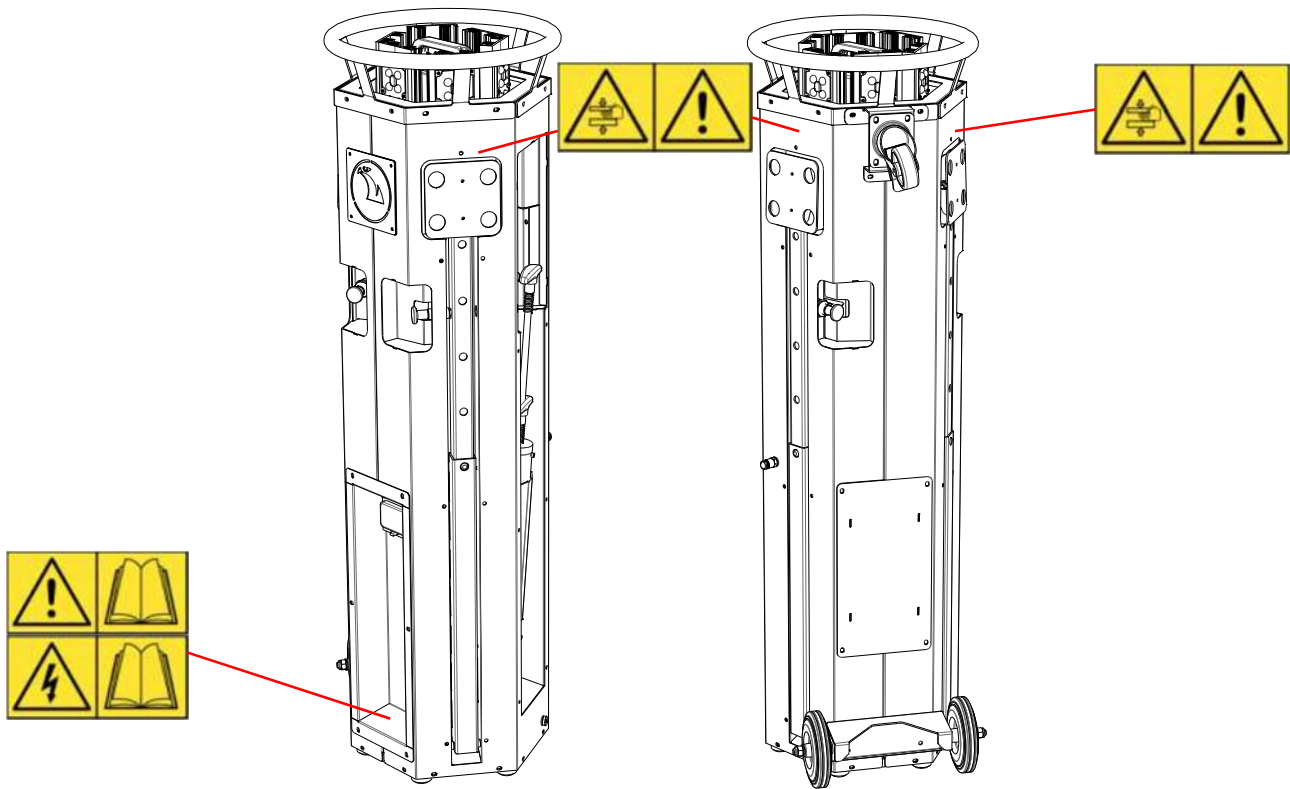
Never wash the unit with a high pressure hose or with any kind of power washer.

Check and replace all missing and hard-to-read labels.

Make sure slings, chains, hooks, ramps, jacks, and other types of lifting devices are attached securely and have enough weight-bearing capacity to lift or hold the equipment safely.

SAFETY RULES

SAFETY STICKERS GUIDE



Safety stickers meanings



Attention! Read user's manual before operating the machine.



Attention, high voltage! Read user's manual before operating the machine.



Attention! Danger of crushing.

TECHNICAL SPECIFICATIONS

MACHINE IDENTIFICATION

1			
2		Type	3
4	Lamps	V	5
		W	6
		Hz	7
Power inlet	V	8	
	A	9	
	Hz	10	
Dimensions L x W x H		11	
Weight		12	
SERIAL N°		13	

Information regarding the machine model, code and year of production is on the unit serial number plate. Always quote the machine model and serial number when contacting your dealer, the factory and for any spare parts requests. All of our products comply with CE requirements. They are conform to directives and fulfill all the relevant safety requirements.

1. Manufacturer's address
2. Manufacture year
3. Machine model
4. CE Logo
5. Lamps rated voltage
6. Lamps rated power
7. Lamps frequency
8. Power inlet rated voltage
9. Power inlet rated current
10. Power inlet rated frequency
11. Machine dimensions
12. Weight
13. Machine serial number

TECHNICAL SPECIFICATIONS

TECHNICAL DATA

FLOODLIGHTS

Type	LED
Power (each)	50W
Floodlight installed	6
IP level	65
Total lumen	39000
Illuminated area	1900 sqm
Operating temperature range	-30°C~45°C
Voltage	230V
Frequency	50Hz

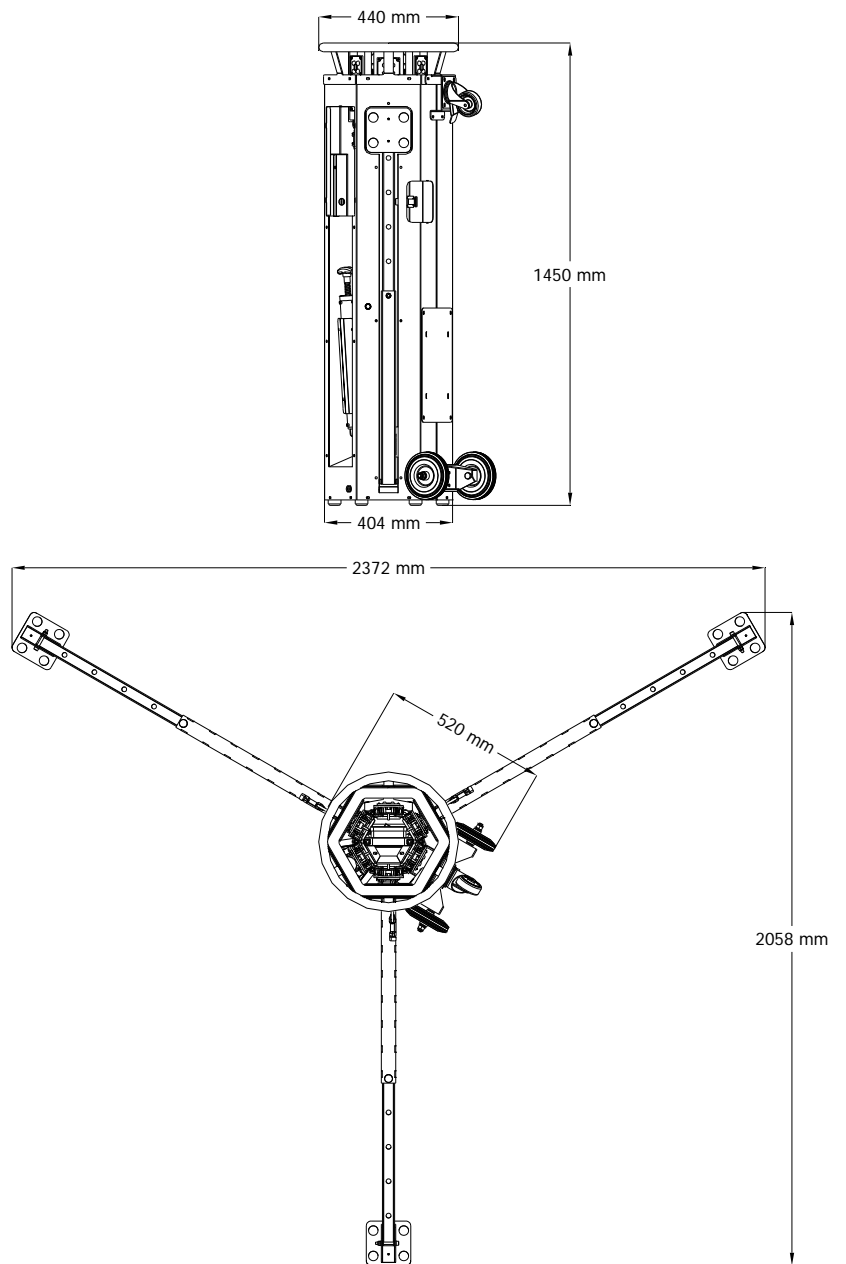
MAST

Lifting method	Pneumatic
Maximum Height	4,3 m
Maximum Wind Speed	110 km/h
Rotation	360°

GENERAL

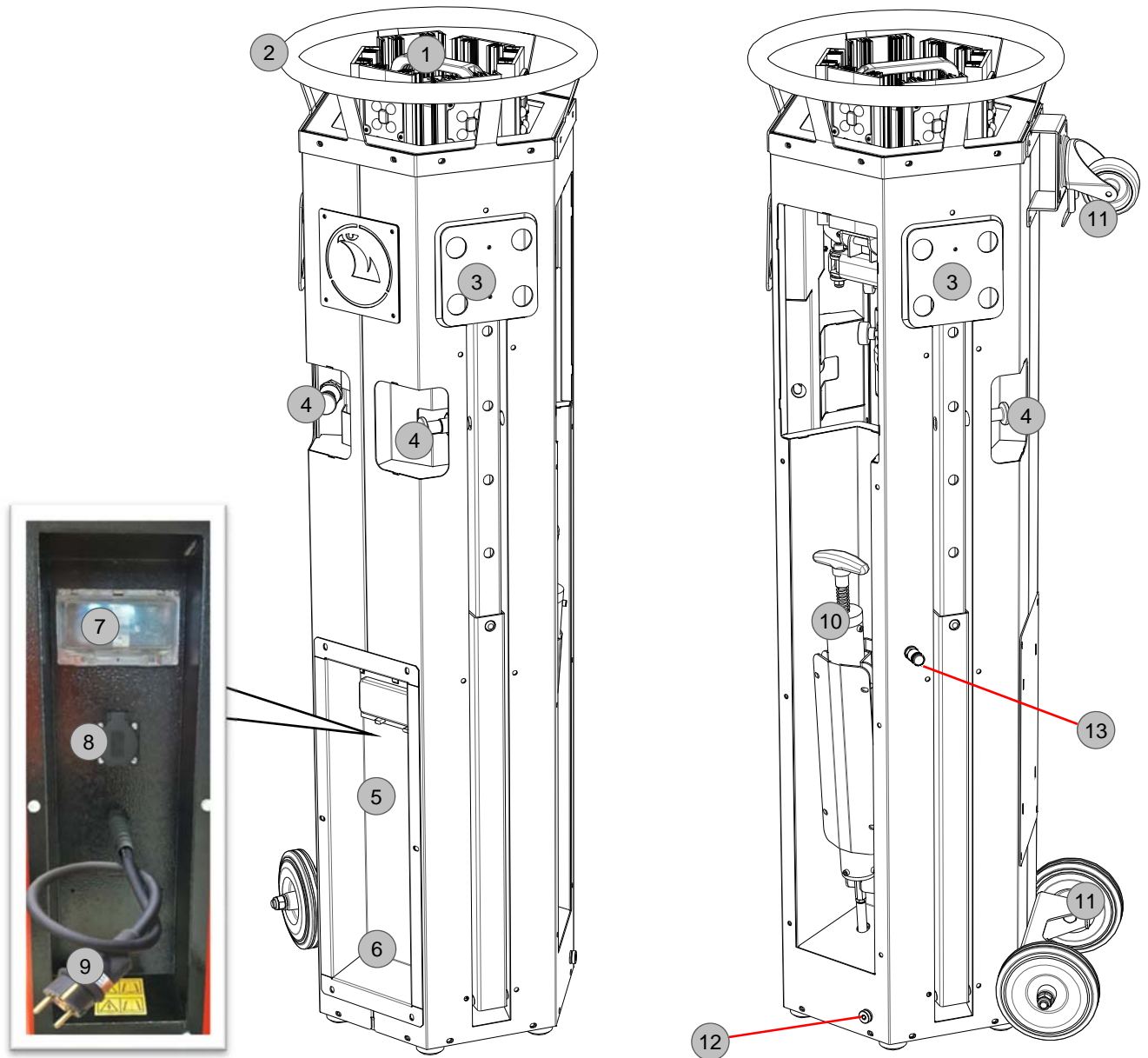
Weight	83 kg
--------	-------

DIMENSIONS



TECHNICAL SPECIFICATIONS

LIGHTING TOWER COMPONENTS



1. Floodlights
2. Handle for manual handling
3. Adjustable stabilizers with tensioner
4. Locking pins for stabilizers
5. Control panel
6. Data plate
7. Lamps switch
8. 230V 16A SCHUKO output
9. 230V 16A SCHUKO Mains inlet
10. Mast lifting manual pump
11. Wheels for manual handling
12. Condensation water exhaust valve
13. Air exhaust valve

LIGHTING TOWER USE

LIGHTING TOWER POSITIONING

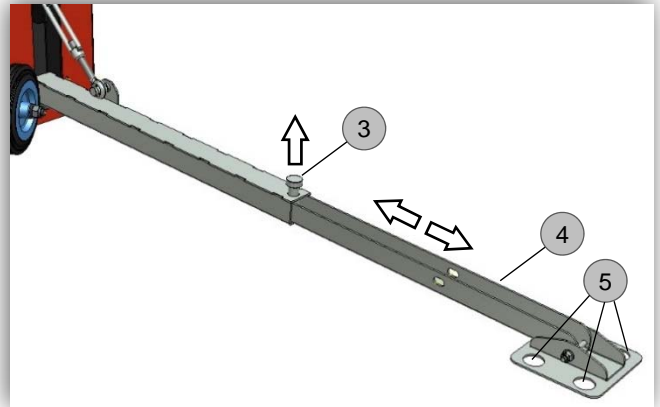
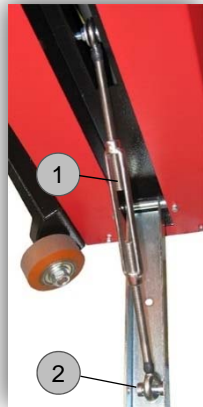
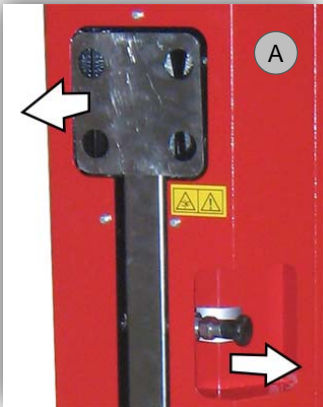
When choosing a location for the lighting tower, bear in mind the following:

- Assess site conditions carefully before positioning and operating the machine.
- The working area should be relatively level and solid. This will ensure smooth, trouble-free telescoping of the mast. (which may not telescope properly if the unit is not level.)
- **Do not position the tower in the vicinity of overhead cables or power lines!**
- **Never raise the mast or operate the tower without properly jacking the unit!**
- For maximum light coverage and illumination efficiency, locate the unit at ground level or in a spot higher than the area being illuminated by the lamps.
- **Do not move the tower with the mast raised!**

STABILIZING THE UNIT

Stabilizing the unit as follows:

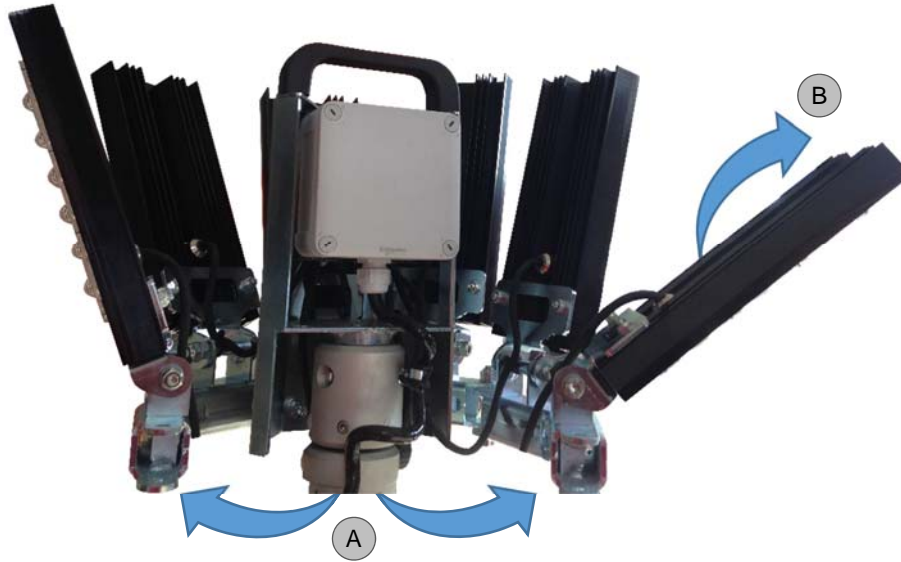
- Hold the stabilizer with one hand and pull the locking pin to release it. Pull the stabilizer outward and resting it on the ground. **(picture A)**
- Secure the tensioner **(1)** to the pin **(2)**.
- Adjust the stabilizers extension keeping the pin **(3)** raised and pulling out the part **(4)**
- Turn the tensioner adjustment until all 3 stabilizers touch the ground.
- Fix the unit firmly to the ground, using the indicated holes **(5)**.



LIGHTING TOWER USE

DIRECTING THE FLOODLIGHTS

- The tower can be rotated up to **360** degrees in order to direct the light as required.
- LEDs can be opened to fan manually **(A)**.
- Each LED can be tilted forward manually **(B)**.
This way the floodlights can be directed either vertically or horizontally.



SWITCH ON THE FLOODLIGHTS

- Connect the unit to the mains using the plug **(2)**.
- Switch on the floodlights using the switch **(1)**.



LIGHTING TOWER USE

ADJUST THE MAST HEIGHT

- Open the first knob, which allows you to free up the movement of the first section of mast.
- Lifting the first section completely, acting on the hand pump.
A section completely raised, proceed to lock it through the handwheel, but only after having stopped the air inlet in the mast.
- Loosen the second handwheel and repeat the pumping operation and then locking upon completion of lifting.
- Repeat the operation until you reach the desired height or the complete extension of the column.

LOWER THE MAST

- Proceed to the lowering of one section at a time, starting from the last one that was raised.
- Then loosen the lower handwheel, act on the valve to discharge the air contained in the mast.
- Proceed as you go with the next handwheel until the operation is complete.
- Lock all the handwheels

ATTENTION!

In case of particularly rigid temperatures, difficulties can occur in the complete lowering of the column for internal ice formation; Normally the weight mounted on the top of the column is sufficient to remove the possible presence of ice. Otherwise use simple denatured ethyl alcohol in the area of the terminal rings at the end of each single extension; if the ice persists, use a heater (max 50 °) in order to remove the thicker ice sheet that prevents the closing of the extensions and subsequently provide for the discharge of the water introduced in the form of condensation of moisture present in the air of filling.

This practice must however be adopted on a weekly basis. The limit of use is set at temperatures below - 40 °C.



Opening rotation

Manual pump

Condensation water exhaust Valve



LIGHTING TOWER USE

MAST MAINTENANCE

At the end of each period of use, during the descent phase of the column, carry out an accurate cleaning of the exterior of the equipment with a cloth just damp to allow the removal of dust. Check the general condition of the structure, verifying the presence of air leaks, deterioration of the surfaces for oxidation attack or abrasion.

WINTER USE

In the winter period it is necessary to empty the condensate water that can form inside the column; this operation must be carried out at the end of the application with a lowered column. Remove the valve (see picture) to allow the drain condensation water.



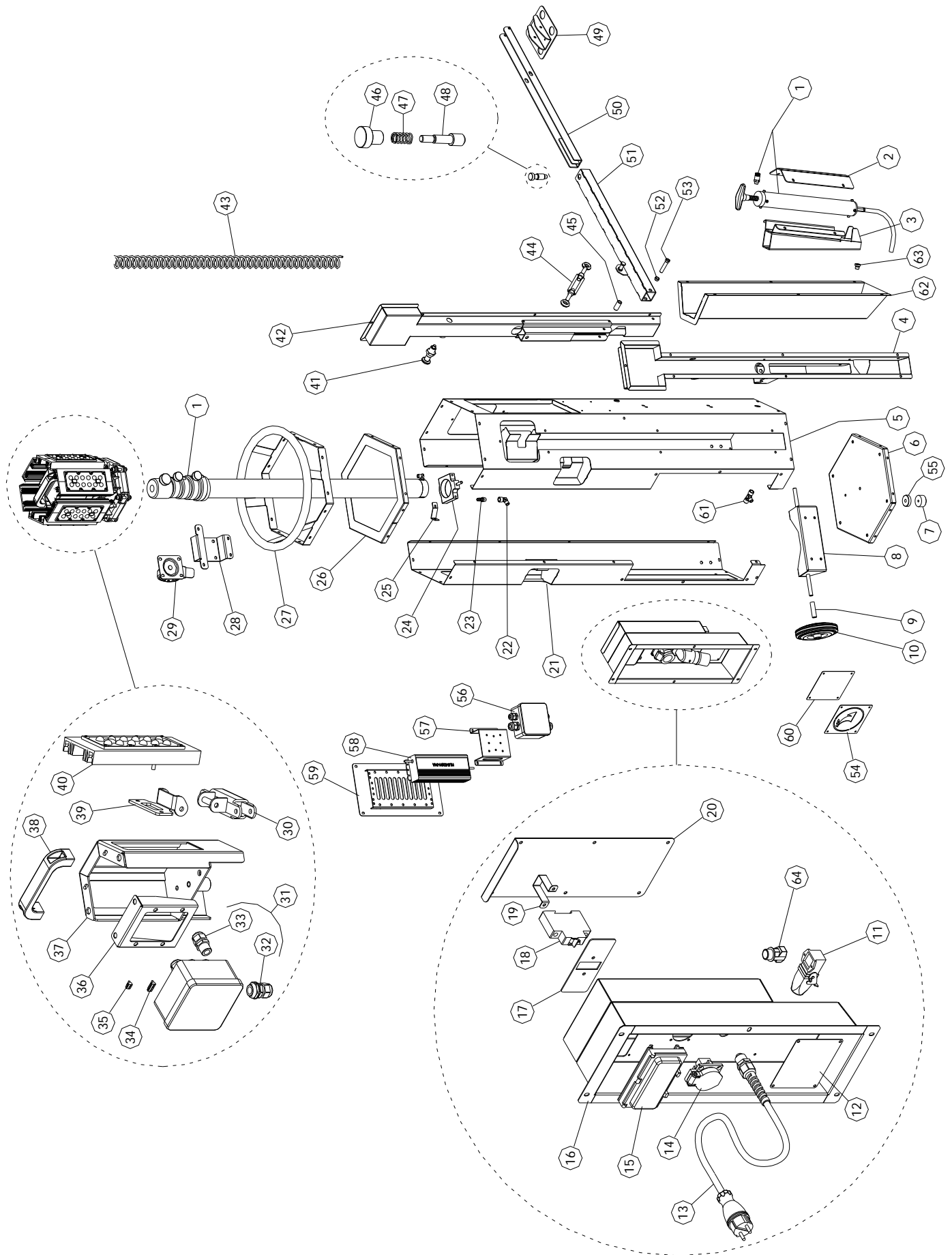
Condensation water exhaust Valve

BYGG-STRÖM

LUX S10



SPARE PARTS



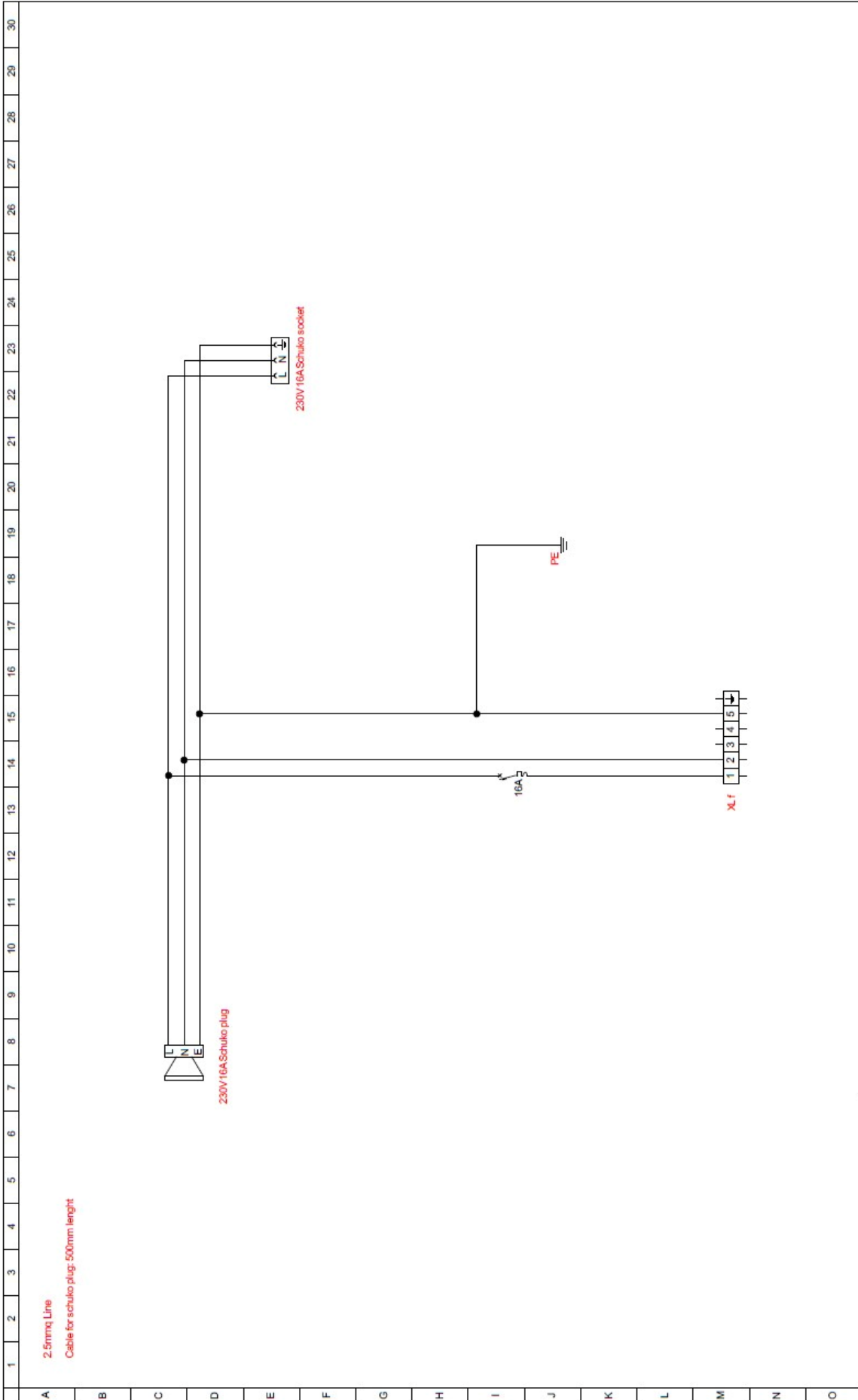
SPARE PARTS

POS.	CODE	DESCRIPTION
1	AC000_M031_001	PNEUMATIC MAST WITH MANUAL PUMP
2	LUX S10_C000_113	MANUAL PUMP STOP PLATE
3	LUX S10_C000_112	MANUAL PUMP SUPPORT
4	LUX S10_C000_007	STABILIZER COMPARTMENT
5	LUX S10_C004_056	COVER
6	LUX S10_C004_001	SUPPORT BASE
7	AC000_P037_016	RUBBER FOOT
8	LUX S10_C000_018	WHEELS SUPPORT
9	LUX S10_C000_019ZN	WHEEL SPACER
10	AC000_M000_128	WHEEL
11	AC000_E000_071	5 POLES CONNECTOR
12	LUX S10_S010_033B	TARGA DATI
13	AC000_E011_018	230V 16A SCHUKO INLET
14	AC000_E011_016	230V 16A SCHUKO PLUG
15	AC000_E000_037	LAMP SWITCH COVER
16	LUX S10_C000_119	CONTROL PANEL BOX
17	LUX S10_C006_033	LAMP SWITCH FRAME
18	AC000_E012_027	LAMP SWITCH
19	LUX S10_C006_034	LAMP SWITCH SUPPORT
20	LUX S10_C000_011	REAR COVER
21	LUX S10_C004_110	COVER
22	AC000_I025_022	CURVED CONNECTOR
23	AC000_I025_021	PIPE FITTING
24	AC000_M000_064	MAST SUPPORT
25	LUX S10_C000_023ZN	PLATE
26	LUX S10_C004_004	TOP FRAME
27	LUX S10_C007_005	ROUND HANDLE
28	LUX S10_C000_055	WHEEL WITH BRAKE SUPPORT
29	AC000_M000_192	WHEEL WITH BRAKE
30	LUX S10_C000_064ZN	FLOODLIGHTS HOLDER CHAIN SECTION

SPARE PARTS

POS.	CODE	DESCRIPTION
31	AS000_E006_053	JUNCTION BOX
32	AC000_E018_008	WIRE HOLDER PG11
33	AC000_E018_007	WIRE HOLDER PG13,5
34	AC000_E006_004	5 POLES CLAMP
35	AC000_E006_003	3 POLES CLAMP
36	LUX S10_C000_024ZN	JUNCTION BOX SUPPORT
37	LUX S10_C000_026ZN	FLOODLIGHTS SUPPORT
38	AC000_M000_005	HANDLE
39	LUX S10_C000_067ZN	FLOODLIGHT SUPPORT
40	AC000_E026_083	FLOODLIGHT
41	AC000_M000_077	PIN LOCK WITH SPRING
42	LUX S10_C000_006	STABILIZER COMPARTMENT
43	AC000_E006_142	SPIRAL CABLE
44	AC000_M000_134	TENSIONER
45	LUX S10_C000_015	BUSHING FOR TENSIONER
46	AC000_M000_132	KNOB
47	AC000_M000_133	SPRING
48	AC000_M000_131	PIN
49	LUX S10_C000_009ZN	STABILIZER FOOT (PART 2)
50	LUX S10_C000_116ZN	STABILIZER (PART 2)
51	LUX S10_C000_115ZN	STABILIZER (PART 1)
52	LUX S10_C000_014	BUSHING
53	LUX S10_C000_013	SPACER
54	LUX S10_C000_032	LOGO PLATE
55	AS000_M023_025	SPACER
56	AS000_E006_063	JUNCTION BOX
57	LUX S10_C006_066	POWER SUPPLY BRACKET
58	AC000_E026_084	POWER SUPPLY
59	LUX S10_C006_109	POWER SUPPLY SUPPORT
60	LUX S10_C000_060	LOGO PLATE CONTRAST
61	AC000_I025_126	"T" CONNECTOR
62	LUX S10_C000_114	MANUAL PUMP HOUSING
63	AC000_I025_127	CAP

ELECTRICAL DIAGRAM



2.5mm² Line
Cable for schuko plug: 500mm lenght

230V 16A Schuko plug

230V 16A Schuko socket

16A

XLF

Data : 02/08/2019

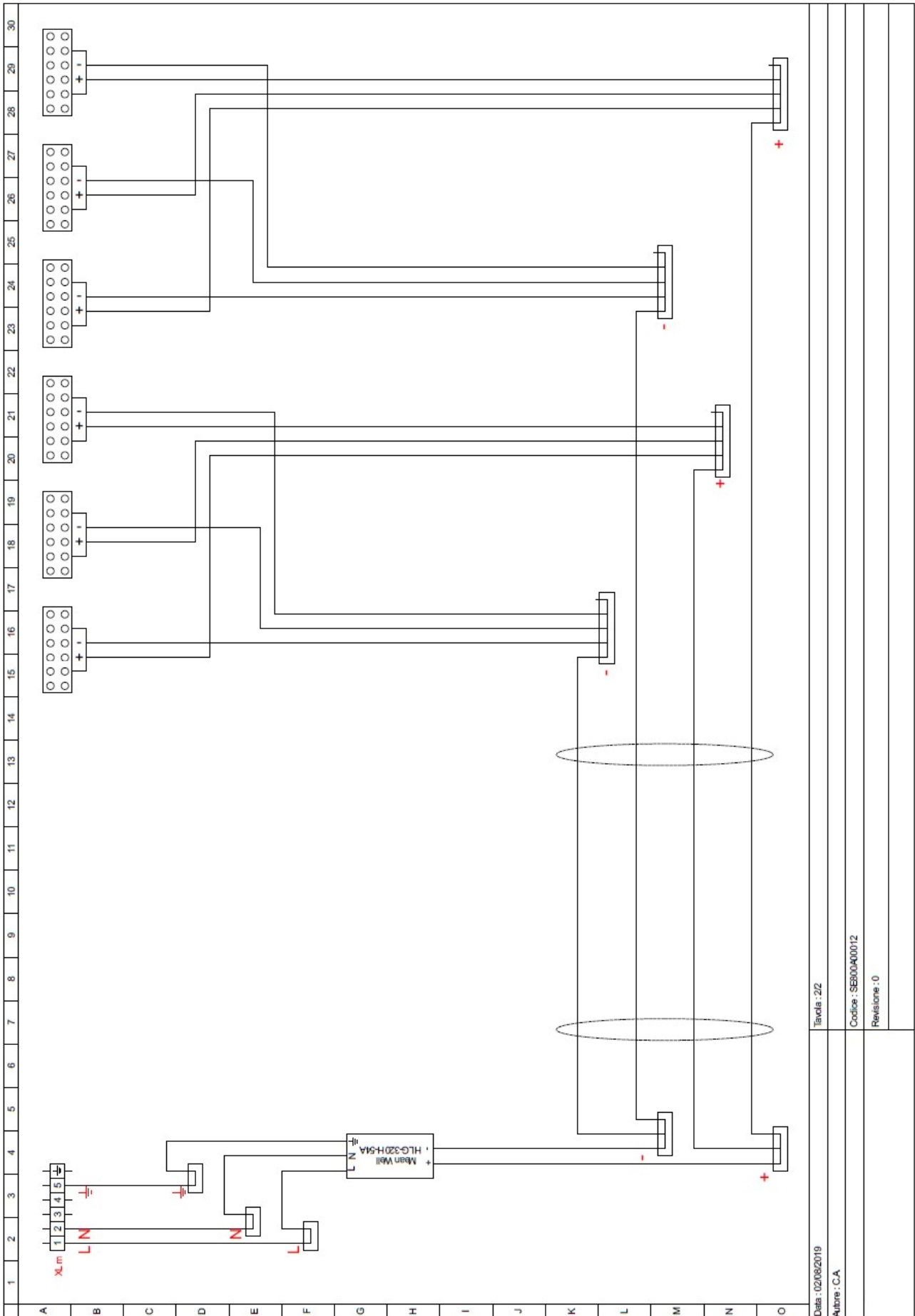
Autore : C.A

Tavola : 1/1

Codice : SEB0040012

Revisione : 0

ELECTRICAL DIAGRAM



Data : 02/08/2019

Autore : C.A

Tavola : 2Z

Codice : SB00A00012

Revisione : 0

WARRANTY

The warranty period Starts on the delivery date to the first purchaser. **The machine is covered by warranty for 1 year from the above mentioned date. Only genuine parts should be used to carry out repairs.** Failure to use only genuine parts may invalidate the manufacturer's warranty. The company reserves the right to request the warranty replaced parts back for analysis.

All engine warranty issues must be directed to the engine manufacturer, or the manufacturer's approved engine dealer.

The company will not be held responsible if:

- the machine has been used to perform tasks that it has not been designed for;
- the machine has undergone modifications not approved by the company;
- conditions of use have been abnormal;
- normal maintenance, compliant to requirements as set out by the manufacturer, have not been adhered to.

No payment or expenses refund should be pretended from the manufacturer for normal maintenance or servicing nor any materials used to carry out routine servicing. The warranty is intended to cover diagnosis, repair or replacement of the defective part, and actuating the repair, should a problem arise during the warranty period. These operations will be performed free of charge.